

PVC-based
Permanent formwork
Lightweight, load-bearing

Ideal for basements, columns, blade & party walls,
lift & stair cores, retaining walls as well
as retention tanks

Permanent formwork walling system for above and below-ground application

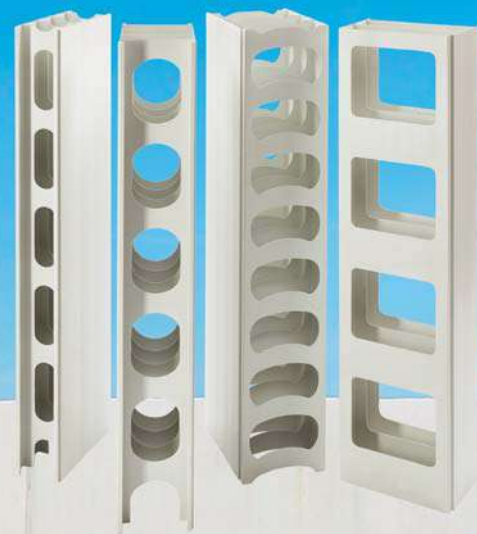
AFS Rediwall® is a PVC permanent formwork system and a time-saving alternative to conventional masonry and blockwork. Its precision-extruded components easily interconnect for rapid installation and there is no specialised training needed.

AS3600-compliant, rediwall® is load bearing for multi-level structures providing a consistently clean, even and water-resistant surface that often doesn't require any finishing.

Offered in four profile widths, the rediwall® range solves above- and below-ground walling needs, from basements, columns, party walls, lift/stair cores, through to retention tanks and retaining walls.

110mm, 156mm & 200mm panels
feature Speedy-Snap-In™ and
Ezy-Fit™ removable corners

256mm panels simply slide
in against each other to
easily interlock



afs rediwall® offers a broad range of profiles and unique open back Ezy-Fit® corners—making simple work of installation

One system provides the complete above and below ground walling solution

Basements, columns, blade and party walls, lift & stair cores, retaining walls & retention tanks

SYSTEM BENEFITS

Why **architects** prefer rediwall®

- System maximises saleable floor space for clients
- AS3600 compliant and water resistant
- Choice of profile widths and comprehensive catalogue of components— one system, one solution
- Panels provide a superior, semi-gloss surface with option for further finishing

Above and below ground versatility



Speed of construction



Ease of materials handling



Speedy-Snap-In™ panels lock together instantly



Ezy-Fit™ corner panels slide open for access



AS3600 compliant and water resistant



Significant waste reduction



Why **engineers** prefer rediwall®

- Simple reinforcement— single and double
- Full width concrete core thickness
- Simple robust bracing methodology
- Quick reinforcement inspection with Ezy-Fit™ removable corners
- Large holes for optimum concrete placement

Why **builders** prefer rediwall®

- Significantly quicker floor-cycles, can save days compared to conventional masonry and blockwork
- Significantly less waste and mess than blockwork
- Most economical alternative to a conventional shoring wall available
- Fewer trades needed and sites are kept cleaner and more efficient
- No craneage necessary
- Panels provide a superior, semi-gloss surface with the option for further finishing

Why **installers** prefer rediwall®

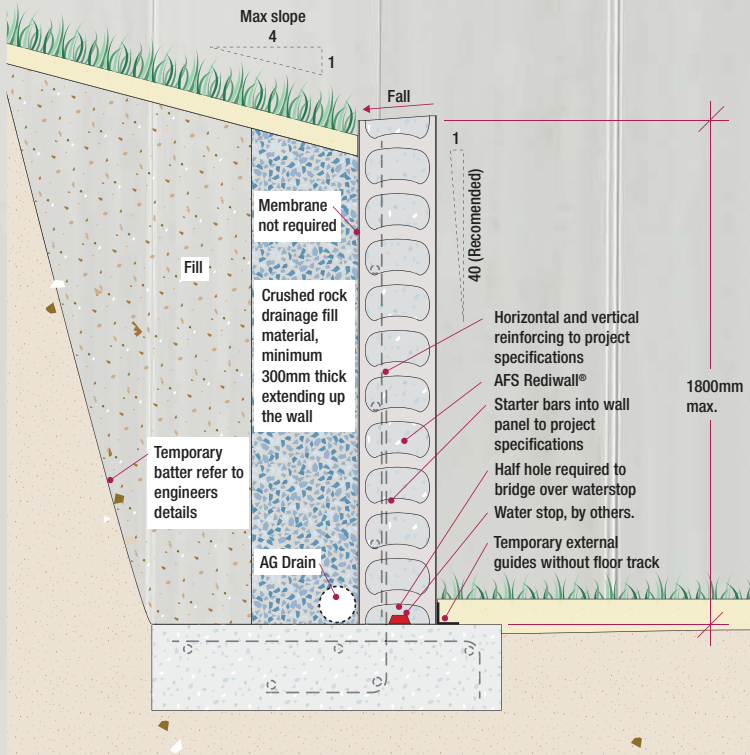
- Panels can be delivered cut-to-size or easily cut down for late changes
- Reinforcement is simple and fast to install and inspect
- Panels can clip or slide together, allowing speed of installation
- Installation is simple to learn and onsite training is available through AFS.



110mm, 156mm, 200mm Speedy-Snap-In™ panels with 90° Ezy-Fit™ removable corners and 256mm slide-together panels for versatile blade walls

Industry-leading innovation for fast, trouble-free installation

The extruded PVC components simply snap or slide readily into place. Assembly is rapid and the resulting wall surface is clean and even.



SYSTEM OVERVIEW

AFS Rediwall® is a PVC permanent formwork system. The extruded components simply snap or slide into place, interconnecting to form load bearing, low maintenance walling.

Installaton of rediwall® can be completed without machinery, doesn't require any specialty trades

and its high quality surface needs no additional finishing for most applications.

Suitable as a tough, low-maintenance load-bearing solution for above and below ground application, it is a truly versatile and efficient walling solution.

RW110

Speedy-Snap-In™

Lengths: 2.8m, 3.0m, 3.2m, 3.6m

Accessories:
Ezy-Fit™ Corner, H-Joiner, T-Joiner, Floor Track, End Cap, FC Strip



RW156

Speedy-Snap-In™

Lengths: 2.8m, 3.0m, 3.2m, 3.6m

Accessories:
Ezy-Fit™ Corner, H-Joiner, T-Joiner, J-Track, M/M Joiner, F/F Joiner, Floor Track, End Cap, FC Strip, 115mm Spacer



RW200

Speedy-Snap-In™

Lengths: 2.8m, 3.0m, 3.2m, 3.6m

Accessories:
Ezy-Fit™ Corner, H-Joiner, T-Joiner, J-Track, M/M Joiner, F/F Joiner, Floor Track, End Cap, FC Strip, 115mm Spacer



RW256

Slide in

Lengths: 2.8m, 3.0m, 3.2m, 3.6m

Accessories:
End Cap, QuickCap™ End Cap, F/F Joiner, Floor Track, FC Strip



afs rediwall® panels <i>Interlocking mechanism</i>		110mm Snap-In	156mm Snap-In	200mm Snap-In	256mm Slide-In
Thickness	Overall	110	156	200	256
	Concrete m³/m²	0.105	0.150	0.195	0.251
Application		Basements, party walls, columns, retaining walls and retention tanks, service and stormwater pits			Blade walls
Acoustic rating (STC)		RW 51 RW + Ctr 44	RW 57 RW + Ctr 50	RW 60 RW + Ctr 53	RW 61 RW + Ctr 54
Fire resistance (FRL)		2 hours	4 hours	4 hours	4 hours

Product specifications and dimensions are subject to change without notice

Ezy-Fit™ 90° Corner with removable cover is an industry-first

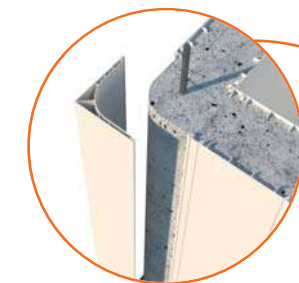
Ingenious corner covers
slide up and down for
easy placement of
reinforcement and
inspection prior
to core filling

A C C E S S O R I E S

Revolutionary Ezy-Fit™

Open-back corner gives unobstructed access
for trouble-free installation of reinforcement bars.

Certifying engineers simply remove the cap to
approve placement prior to pouring concrete—
that's not possible with conventional systems.



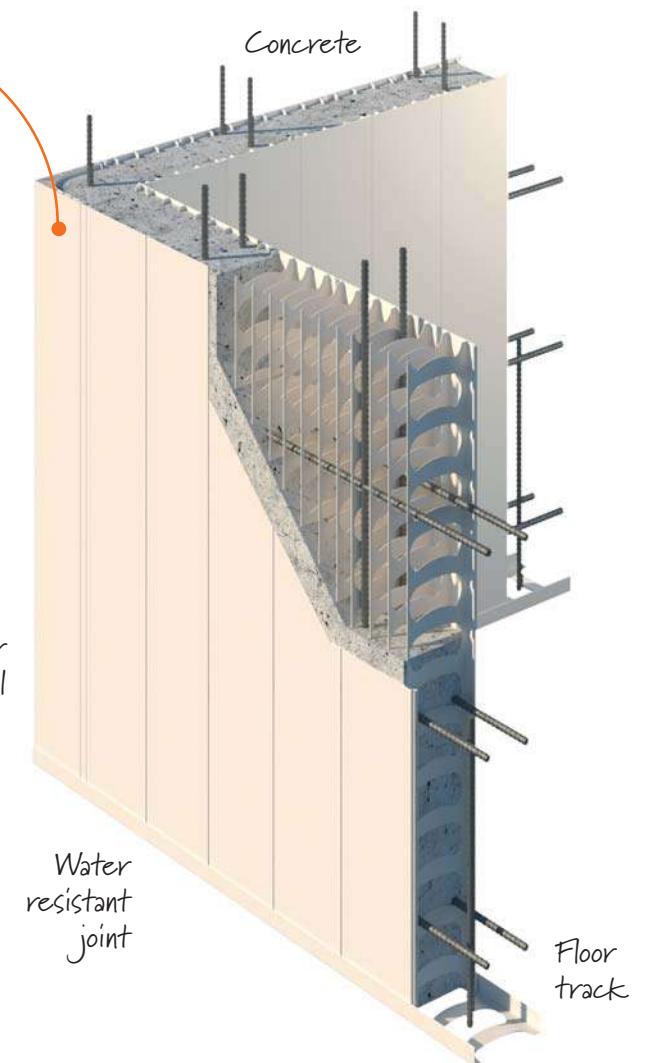
Industry-first: Ezy-Fit™ Corners

The outer cover effortlessly slides up for
trouble-free access to reinforcement.
With everything in place, it simply slides
back to allow core filling.



Corner
panel

Outer cover
slides up for
access



Concrete

Water
resistant
joint

Floor
track

Comprehensive walling system

The rediwall® system offers an exhaustive range
of accessories—specific to each profile width—

including everything you need to make curved
and straight walls, above or below ground.



Corners



H-Joiners



T-Joiners



J-Track



115 Spacers



End Caps



Floor Track



To learn more visit
afsfomwork.com.au



Patented Speedy-Snap-In™ system ensures easier, faster installation

CONSTRUCTION

Snap, brace, pour

110mm, 156mm and 200mm PVC-based panels simply snap-in together, while the 256mm profiles utilise a slide-together action.

Regardless of the interlocking mechanism, rediwall® panels can be quickly installed and braced for core-filling, without specialised training or trades.



Lightweight panels make for easier materials handling



Panels effortlessly interlock with snap-in or slide-together mechanisms



And simply slide down to seat into the floor tracking and form a wall



Bracing



Reinforcement placement



Core filling

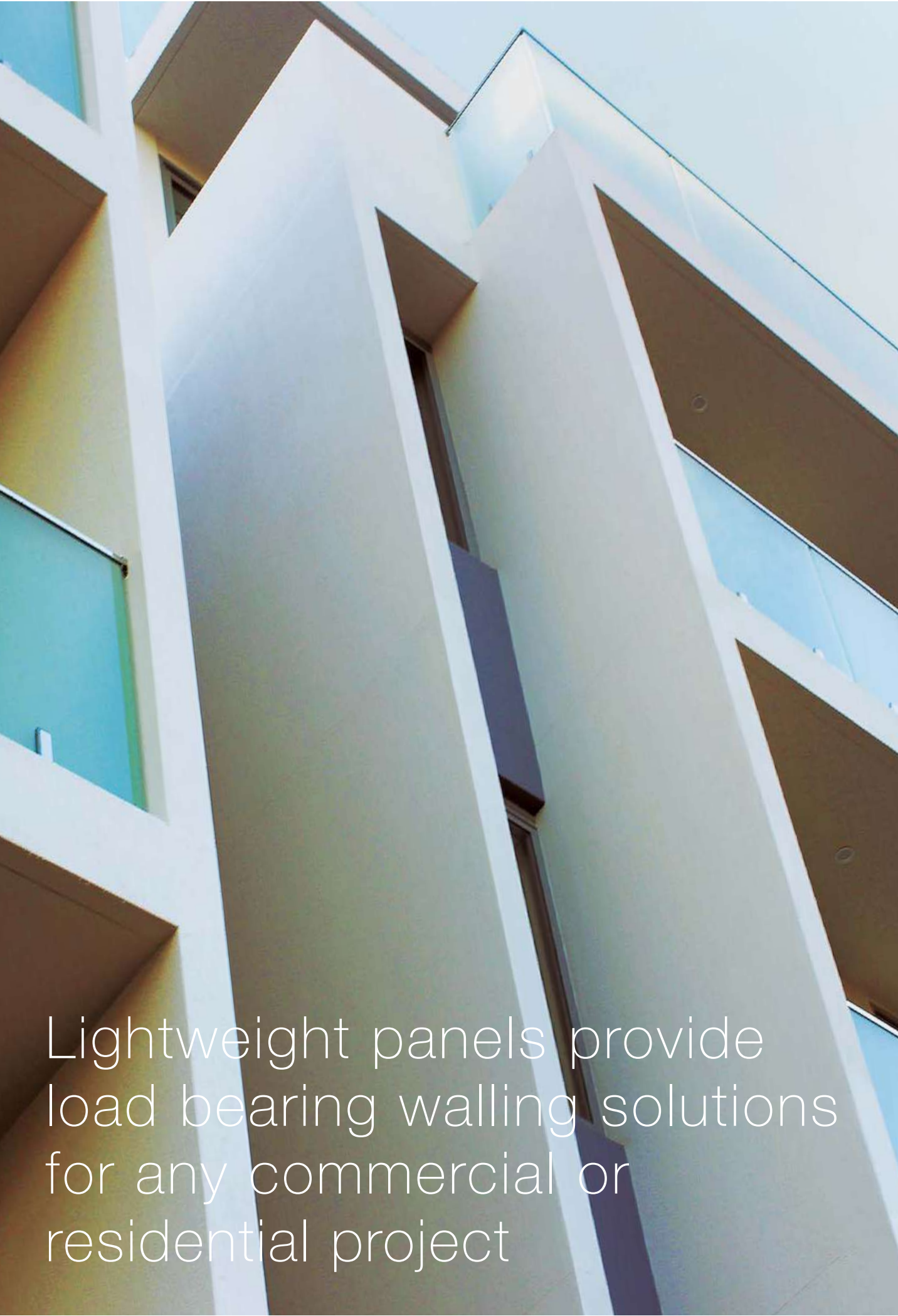
INSTALLATION GUIDE AND AFTER-SALES SERVICE

Dedicated project co-ordinators and on site training & assistance



By design the afs rediwall® system can be installed by anyone without training, with the assistance of our Installation Guide.

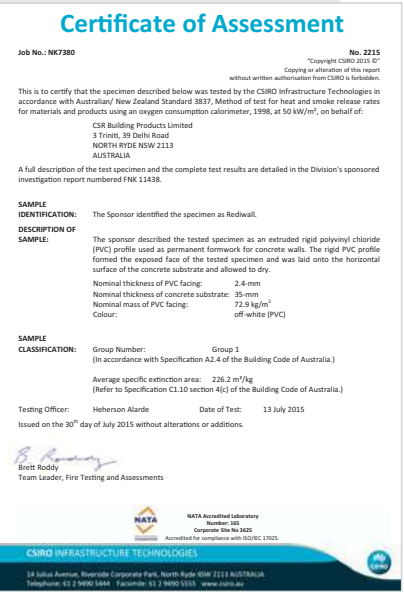
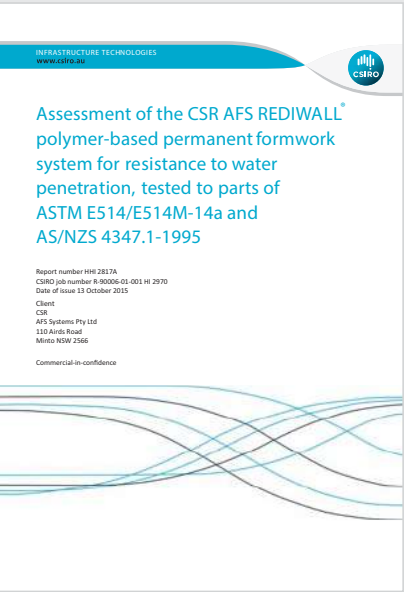
Additionally, our after-sales service team offers customers hands-on assistance on-site. Or you can choose an AFS-recommended installer.



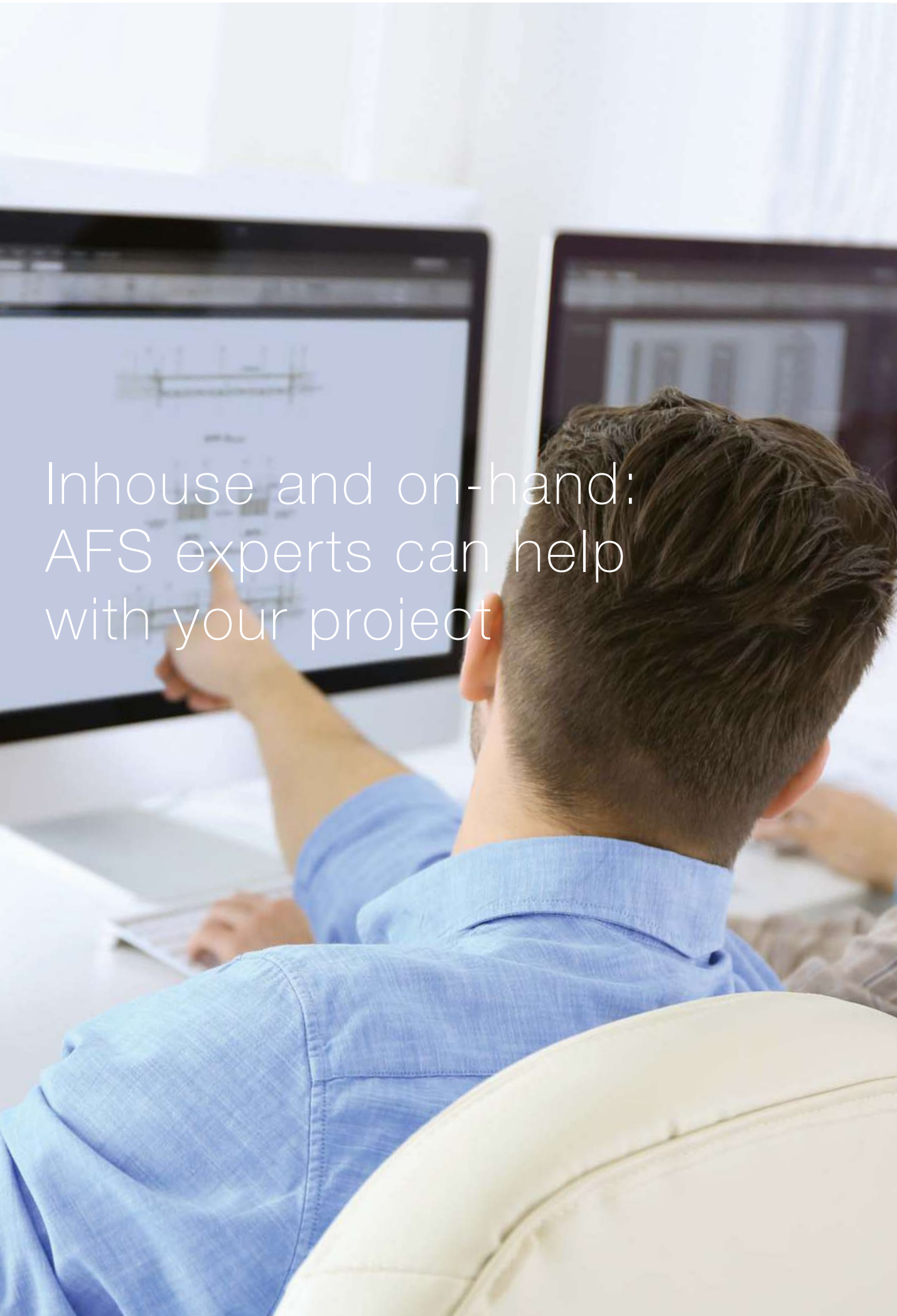
Lightweight panels provide load bearing walling solutions for any commercial or residential project

COMPLIANCE & CERTIFICATION

AS3600 compliant and CSIRO-certified for fire compliance and resistance to water penetration



rediwall® can be utilised for above or below ground applications whether straight or curved

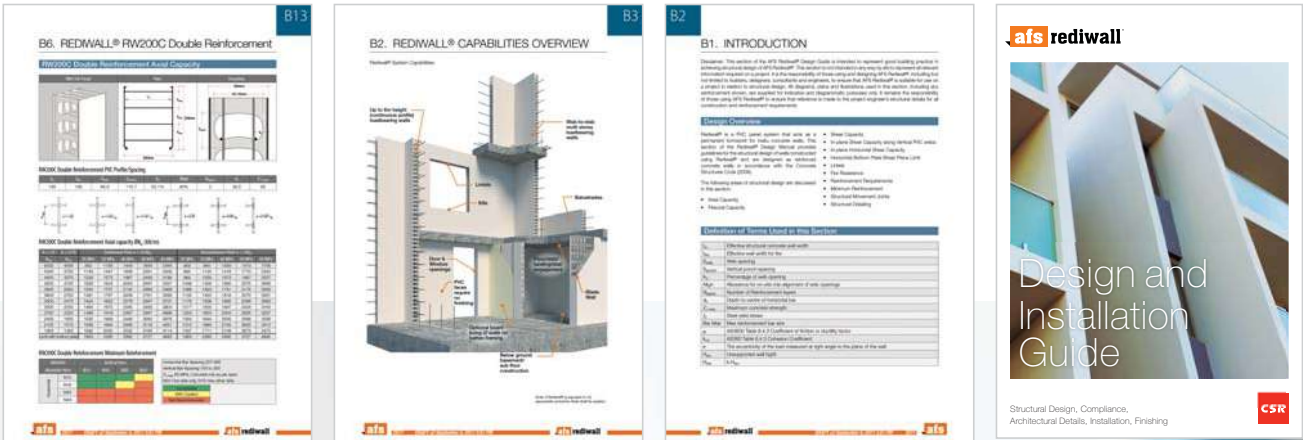


Inhouse and on-hand:
AFS experts can help
with your project

OUR DESIGN TOOLBOX & GUIDES

AFS offers architects, engineers and builders a wealth of technical reference and in-house engineering, drafting and estimating expertise.

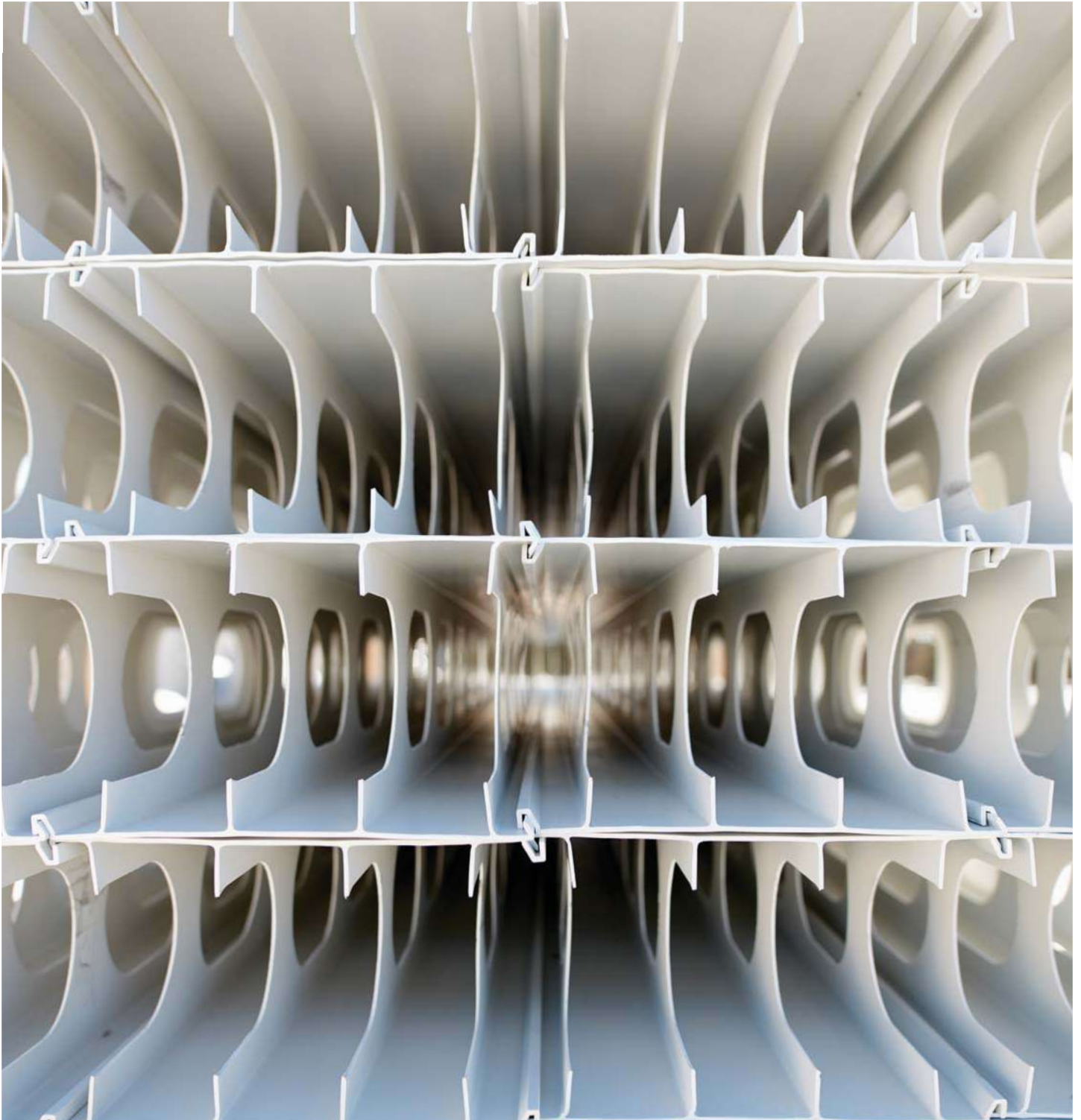
This ensures a customer can get the best advice on a project at concept design or when plans are available. Building professionals enjoy how easy the AFS website makes it to upload plans for assessment and estimation.



Customers enjoy ready reference to technical manuals, papers and design guides



PVC-based permanent formwork for basements, columns, blade
& party walls, lift & stair cores, retaining walls and retention tanks



Disclaimer: Information presented in this document is supplied in good faith and to the best of our knowledge was accurate at the time of preparation. The provision of this information should not be construed as a recommendation to use any of our products in violation of any patent rights or in breach of any statute or regulation. Users are advised to make their own determination as to the suitability of this

information in relation to their particular purpose or specific circumstances. Since the information contained in this document may be applied under conditions beyond our control, no responsibility can be accepted by AFS or CSR, or its staff for any loss or damage caused by any person acting or refraining from action as a result of misuse of this information.

(C) 2017 AFS Systems Pty Ltd ABN 455 760 727 88
RED00NOV17



afsformwork.com.au • 1300 727 237
AFS Systems Pty Ltd • 110 Airids Road, Minto NSW 2566

